

2025 

**Year to
grow**



What



The Year to Grow programme is designed for people to commit and give a year to the Lord.

Primarily designed for post-matric young people, the programme is open to people of all ages and background.

You will serve as part of the View Church Tygerberg Hills Staff team and work alongside the permanent staff to deliver and facilitate world class, life-giving services and discipleship to our church family. As a result the Year to Grow person is seen as a leader of leaders and represents the values and attributes of View Church Tygerberg Hills.



Who

As a Year to Grow candidate, we are looking for people who **love Jesus**, **love people** and have a desire to see the **church grow**. The candidates should have passed their matric and have support of their family to complete the programme.

We want the programme to bless the individual and we have created a year long programme where you will grow in four areas of your life:

✔ Relationship with God

✔ Relationship with others

✔ Leadership skills

✔ Workplace conduct

Persons applying who are older need to ensure that their family life and responsibilities will be blessed by the programme. Spouses, if applicable, would be interviewed to ensure they are supportive and on board with the programme.



31 October
6-9 November
10 November

Applications close
Interviews will take place
Feedback / Acceptance

Experience

The Year to Grow programme will develop your ability to handle and grow in professional environments.

- ✓ People skills – communication and interpersonal
- ✓ Administration
- ✓ Collaborative skills – different ages/cultures/backgrounds
- ✓ Workplace skills and office etiquette
- ✓ Leadership – management and event planning
- ✓ Broadcast and technical
- ✓ Responsibility
- ✓ Flexibility and humility

Cost

There is no fee to take part in the Year to Grow programme

The church will cover your cost to attend meetings and conferences, but you will need to raise funds to attend camps, Holiday Club and the Zambia Missions Trip.

View Church Tygerberg Hills is agreeable in people having another source of income such as tutoring, coaching etc.

scan to apply





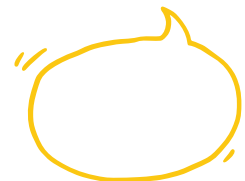
Emkay was our first Year to Grow participant, here's how the year has changed his life.



I joined Year to Grow in the search of wanting to grow more in my faith. Since then I've grown a lot in that and even more so.

I got exposed to different parts of ministry, serving in Kids, discovering my love for Production, being a Youth leader and most importantly the connections and Godly friendships I've made in our Church and other churches.

This is the greatest decision I've made in my life and one that will live with me forever.



PERSONAL development

Personal Growth

As a Year to Grow candidate, you will work hard to ensure that View Church Tygerberg Hills ministries are healthy and that our people are moving towards **spiritual maturity** in all areas.

A Year to Grow is a calling from God, but it does not necessarily mean that the Year to Grow will work full-time in God's church. The world we live in needs spiritually mature, hard-working, passionate people who can lead in their industry, business, education, arts, politics and all other working environments around the globe. When the church of Christ takes leadership roles in all spheres we will see the world changed for God's glory.

To this end, we believe in Personal Growth for all Year to Grow participants. The Personal Growth programme will support the development and growth for each person in 4 key areas

1

GOD

Worship, prayer, Biblical understanding, devotion, quiet time and Biblical study

2

RELATIONSHIPS

Connecting with others, leading your peers, dealing with difficult people and dating.

3

OWNERSHIP & LEADERSHIP

5 levels of leadership, understanding of key leadership techniques and principles.

4

WORK PLACE

Finance, professional conduct, communication, computer understanding and much more.



Book Review

Each term the Year to Grow participant will work through a book on leadership or personal development. Each week the team meets to discuss and interpret the book, applying the principles into their life.



Check In

Each term, the Year to Grow will have a one-on-one check in with the senior leadership team. A check in is designed to focus on a person's individual development, review their performance and support them to pivot and make changes to grow.

The senior leadership team are on hand to support, direct, challenge and facilitate the growth in a Year to Grow. Our leadership team have skills and expertise in ministry and business which is utilised to develop the Year to Grow as an individual. The Year to Grow is expected to work hard, be a person of character and to give 100% to the role at all times.

Conferences & Camps

Our Year to Grow participants are expected to be at all camps that our Youth or Next Gen leaders attend, and will have to raise the funds to attend these camps.

Our staff attend the Western Cape Ministers Meeting four times per year. Any ARC Conference, AOG Conference or internal conference for View Church Tygerberg Hills will be sponsored for the Year to Grow. These conferences and camps will enrich and bless the individuals in their life and Christian experience.



SATS Courses

Year to Grow participants will be doing two theological courses from the South African Theological Seminary over the year, to help you with your theological training. This is helpful to those wanting to pursue full-time ministry as a career, or for those who want to understand the bible better.

Expectations



Year to Grow participants form part of the staff team and are the junior members of the team. The normal duties of a Year to Grow include, but are not limited to, the following:

- | | |
|-----------------------|--|
| Staff Meetings | Attend and actively participate in Monday staff meetings and Wednesday prayer meetings |
| View Youth | Attend View Youth every Friday
Lead a View Youth group
Be responsible for shopping, stock management, slips and budgets
Create runsheets
Create social media content |
| Administrative | Arts and crafts, cutting out, printing etc as needed
Make phone calls and assist with Planning Center
Collect, carry and shop as required using their own vehicle. Fuel can be reimbursed. |
| School visits | Visit primary and high schools to connect and invite young people to our ministries |
| View Group | Attend a View Group and take attendance |
| Funerals | Support funeral services through production, hosting and catering |
| Events | Serve at all events; Ladies Night, Mens Night, Easter services, Christmas, Holiday Club, camps etc. |

Work Hours



DAYS OF THE WEEK

Sunday

Monday

Tuesday

Wednesday

Friday

All staff members are expected to attend prayer meetings, events and gatherings during the week. It is important to remember that our Volunteer Teams work full time and then fulfill voluntary roles in the church.

During Holiday Club, camps and conferences hours may vary and late nights will be expected.

Holidays are given to the Year to Grow throughout the duration of the calendar year to coincide with quiet times. Family events and leave cannot be guaranteed as the requirements of the role are to be available at key times.

Year to Grow is highly demanding and will require a great deal of effort, time and dedication. The role will require you to pivot and rebalance the other areas of your life.

WHERE

View Church Tygerberg Hills

120 Fairfield Street, De Tijger, Cape Town, 7500

<https://maps.app.goo.gl/GUcVZMA6VgENmYt7>

View Church Tygerberg Hills Equip Centre

7 Barrow Street, Monte Vista, Cape Town, 7460

<https://maps.app.goo.gl/FnhEC1647ZWmtgsz8>

2025 Calendar

JANUARY

15th Year to Grow starts
Prayer & Fasting Week

FEBRUARY

Vision Sunday
Birthday Sunday

MARCH

The Stand

APRIL

Easter

MAY

AOG Conference

JUNE

Holiday Club

JULY

Zambia Mission Trip
Prayer & Fasting Week

AUGUST

SEPTEMBER

ARC Conference

OCTOBER

NOVEMBER

DECEMBER

Christmas Experience
Staff Year-end
Programme ends



Family & Life

The Year to Grow programme is an intense environment and View Church Tygerberg Hills is full of vision to bless our community. Due to this we have high flexibility in times of calm but when we have a key event, conference or Sunday in mind we put our full effort in to see its success. With this in mind our Year to Grow will work hard and may miss key family activities throughout the year.

Whilst we make every effort to support the Year to Grow in key moments there are limits to the flexibility. For post matric individuals this is a big change for the family as the young person's calendar was fairly consistent during school. As a Year to Grow it will be varied and will cause them to grow up and begin to have experiences, moments and activities that are not a part of the regular family dynamic.

Support



The Year to Grow is managed day to day by the Next Gen Pastor, Ryan Warner, and our Senior Pastors, Dino & Kelly Cicatello. They will oversee and ensure that the Year to Grow are developed and supported.

A parent can contact RyanW@viewchurch.co.za should they have concerns about their young people during the year.

Legal Info

Agreements

Agreements are issued to the Year to Grow for the duration of the year. All parties ensure adherence to the staff requirements, and church leader guide. The BECA policies are followed for each person.

Finances

A Year to Grow will have a View Church Tygerberg Hills pre-paid credit card for work purposes only. The Year to Grow is expected to work with high integrity and accuracy when handling cash or spending money.

Any person found to be dishonest will be removed from the programme and if necessary details handed to SAPS for review.

View Church Tygerberg Hills is audited per year, we are accountable to God for the finances and as such holds itself to a high standard.

Confidentiality

Working for View Church Tygerberg Hills is a privilege, and it is vital that what you learn and see about people should not be shared outside of the group. Many of our families are a part of church so at all times we must ensure that our church and leaders are represented well to those inside and outside the church.

**CONTACT RYAN FOR
MORE INFORMATION**

082 307 7485

RyanW@viewchurch.co.za

WE'RE SO EXCITED TO
SEE YOU IN 2025!